

Bottom EL 484.0
 Depth 3'
 Side Slopes 2:1
 Bottom Dimensions 28' x 60'
 Weir Length 1.8'

Bottom EL 474.0
 Depth 3'
 Side Slopes 2:1
 Bottom Dimensions 95' x 15'
 Weir Length 1.8'

12 LF Ungrouted Rip Rap
 D50 = 6" @ 12" Thick
 See detail sketch

2.8 Ac.
 C = .25
 D

10% R+P
 90% Gross

LOT 18

0.5 Ac.
 C = .25
 C

90'

LOT 20

I-9

9-8

W. HOLE No. 7

E.D. (A-1)

E.D. (B-3)

E.D. (B-1)

E.D. (A-3)

WETLAND

OPEN

PRIVATE

BULFORDS

EASEMENT

KEEP

KEEP

KEEP

KEEP

KEEP

KEEP

KEEP

KEEP

KEEP

KEEP

KEEP

KEEP

KEEP

KEEP

KEEP

KEEP

KEEP

KEEP

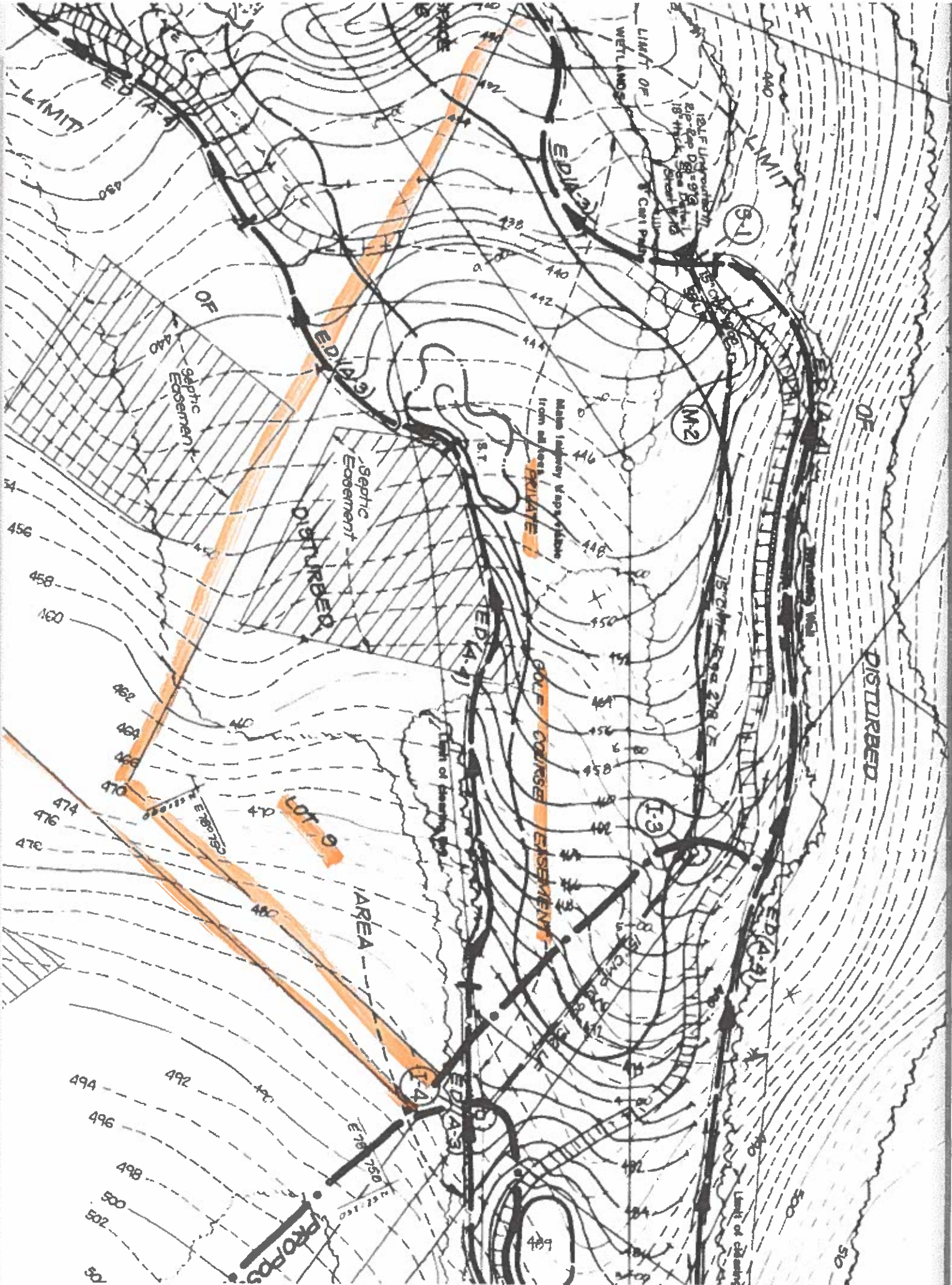
KEEP

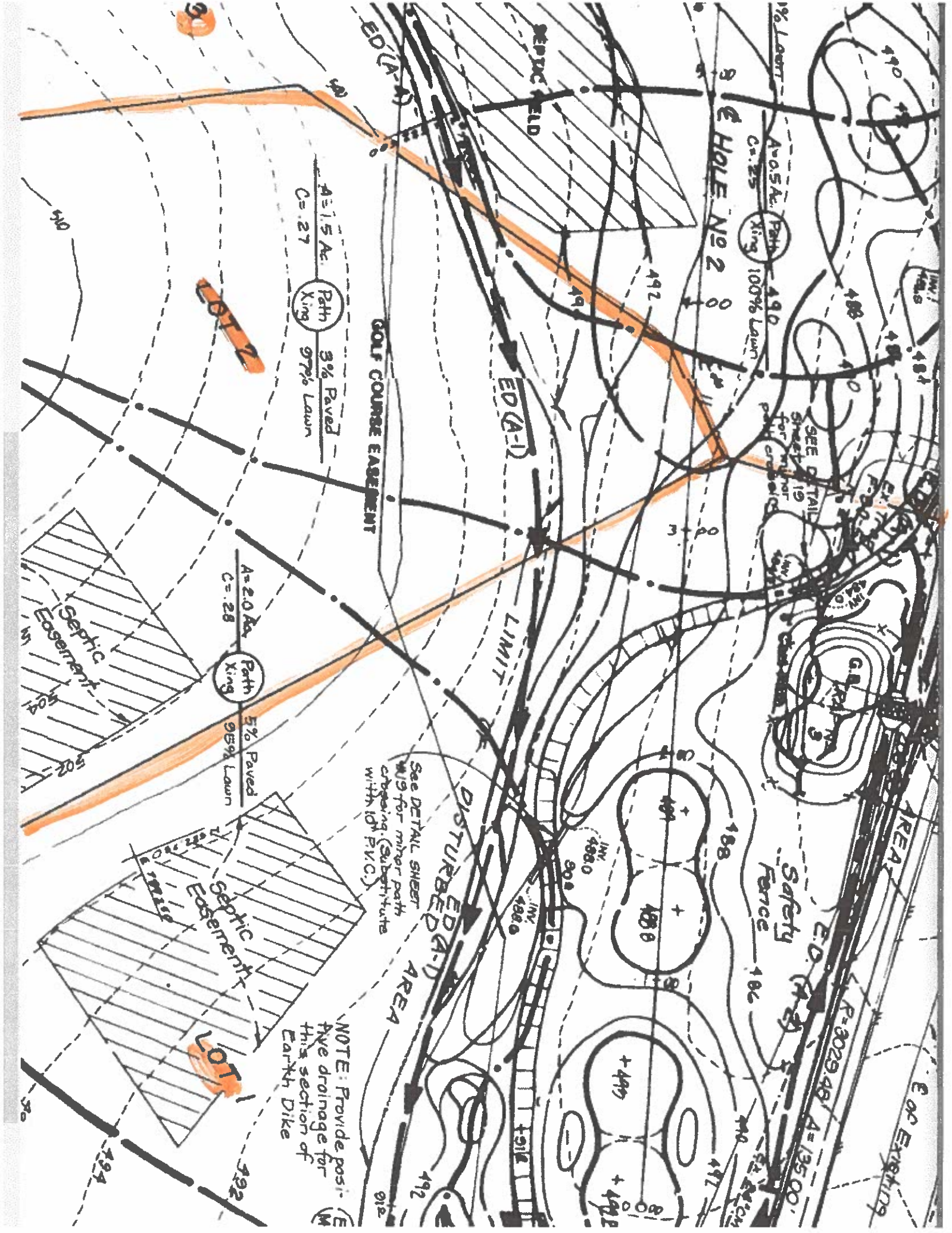
KEEP

KEEP

KEEP

KEEP





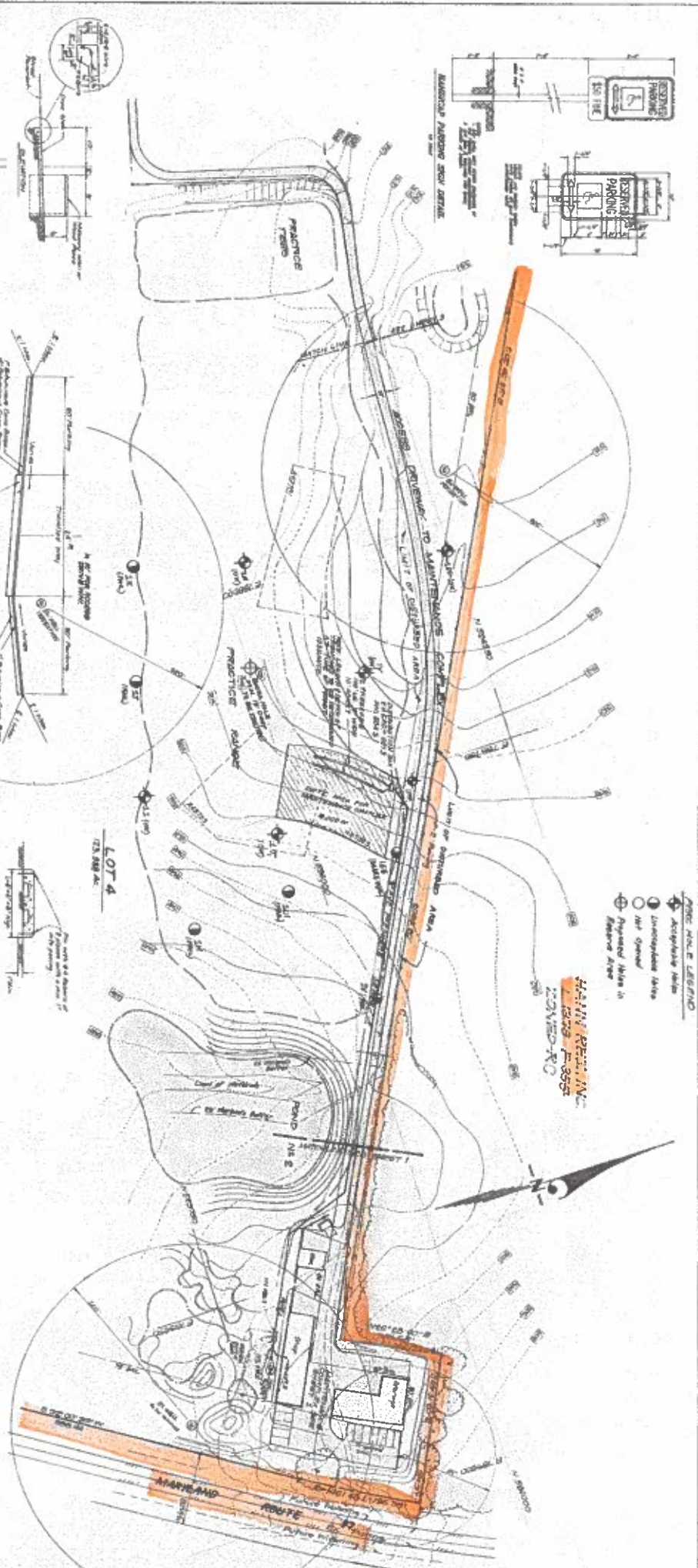
NOTE: Provide pos. (E) PVE drainage for this section of Earth Dike

See DETAIL SHEET #19 for minor path crossing (Substitute with 10' P.V.C.)

SEE DETAIL SHEET #19 for minor path crossing

- NOTE: SEE LEGEND**
- ◊ Accessible Walk
 - Unimproved Area
 - Wet Ground
 - ◉ Proposed Walk in Future Area

HANN REEM, INC.
 1325 P-3555
 CANNON, MO



CHINA'S TIER, PAID AND ENCLOSED
 AS SHOWN

ALTERNATE PARKING SECTION FOR TRAVELER WAY/FACROSS DRIVE
 AS SHOWN

TYPICAL PARKING WITH INSTALLATION OF CURB STOP
 AS SHOWN

APPROVED FOR THE CITY OF CANNON, MISSOURI
 CITY ENGINEER: [Signature]
 DATE: 11/11/15

APPROVED FOR THE CITY OF CANNON, MISSOURI
 CITY ENGINEER: [Signature]
 DATE: 11/11/15

APPROVED FOR THE CITY OF CANNON, MISSOURI
 CITY ENGINEER: [Signature]
 DATE: 11/11/15

APPROVED FOR THE CITY OF CANNON, MISSOURI
 CITY ENGINEER: [Signature]
 DATE: 11/11/15

APPROVED FOR THE CITY OF CANNON, MISSOURI
 CITY ENGINEER: [Signature]
 DATE: 11/11/15



CLARK + FINEROCK & SOCKET, INC.
 ENGINEERS - PLANNERS - ARCHITECTS

**5776 STATE STREET AND
 3RD AVENUE
 CANNON, MISSOURI 63551**

**PROJECT: COUNTRY CLUB
 ADDRESS: 1325 P-3555
 SHEET NO: 18 OF 20**

**DATE: 11/11/15
 SCALE: 1" = 50'
 DRAWN BY: [Name]
 CHECKED BY: [Name]**

